

SIGNS OF A LEARNING DISORDER

Below are some signs that there may be more to a child's learning difficulty.

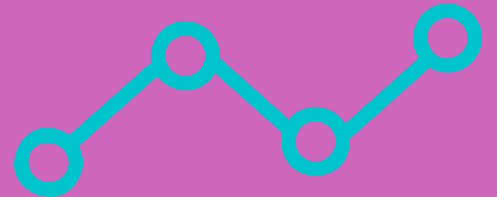
LONG TERM DIFFICULTIES



Learning disorders do not appear overnight. Children with learning disorders generally have had some level of difficulty since commencing school.

INCONSISTENT RESULTS

Children with learning disorders often do poorly in English or Math (or both) but do better in other subjects. Teachers often expect the child to do better because they appear very bright.



ATTENTION DIFFICULTIES



Difficulty paying attention, easily distracted, forgets instructions, lacks attention to detail, fails to complete tasks, loses things, disorganised.

HOMEWORK BATTLEGROUND

Homework is particularly stressful for children with learning disorder (and their parents!). It becomes a battleground for family arguments as children try to avoid it and struggle with the content.



BEHAVIOUR CONCERNS



Children are very clever at covering up their difficulties and often this is done with behaviour. Children can also appear as though they are not trying hard enough or are ignoring instructions or are deliberately not paying attention.

READING & WRITING

- Struggle to recall words and letters even though they have learnt them many, many, many times.
- Guesses words instead of sounding out.
- They will struggle to retell a story or explain what it means.
- Confuses letters which look similar e.g. p, b, d, q
- Poor handwriting.
- Many spelling and punctuation errors.

MATHEMATICS

- Difficulty doing sums in their head.
- Misreading the operation sign (i.e. confusing + - x).
- Frequently make miscounting errors.
- Struggle with multi-step problems.



WHAT NEXT

A Child Psychologist can discuss any concerns you have and if needed investigate your child's difficulties further.

FOR REFERENCE: